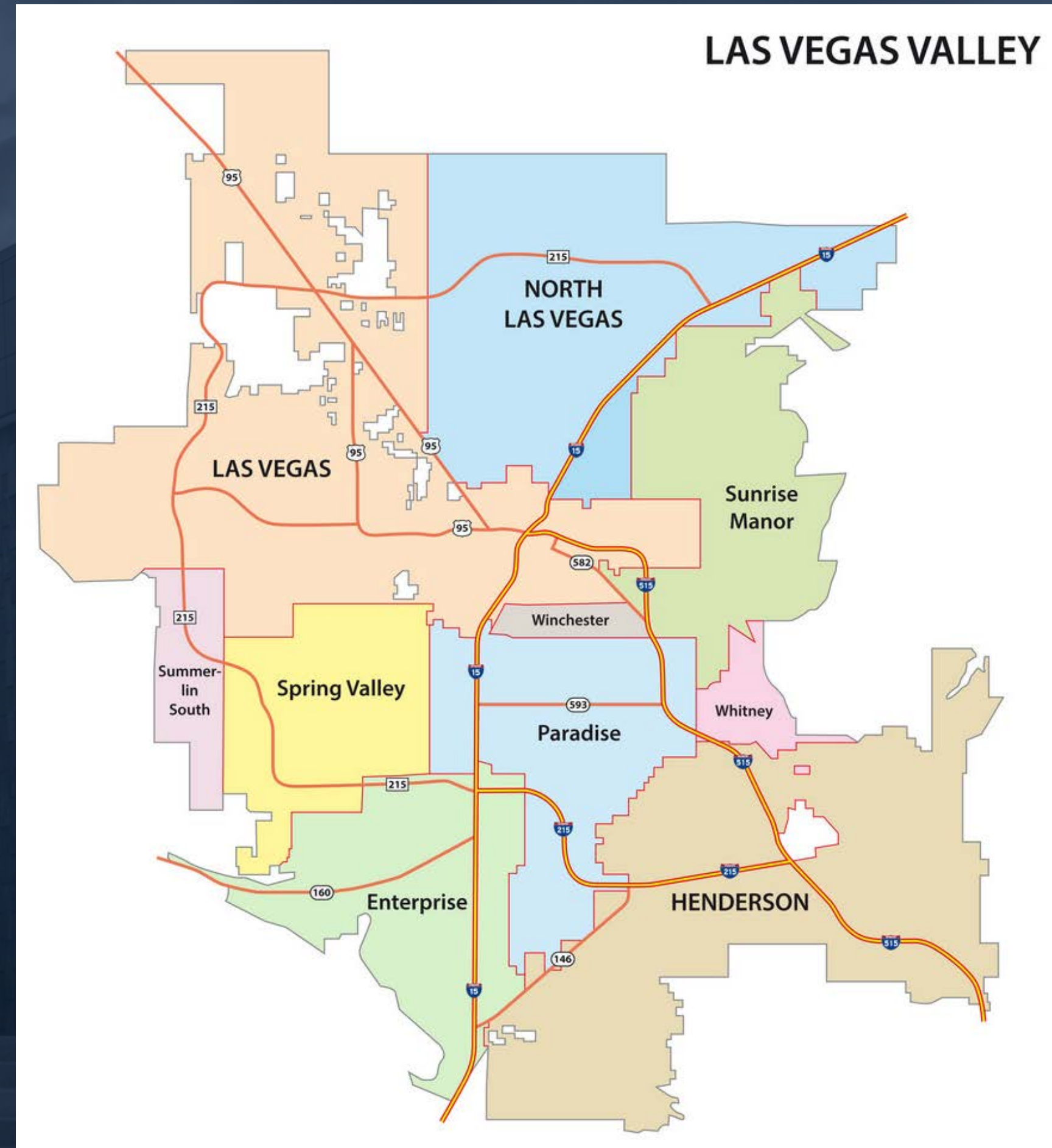


HENDERSONTM

Parks and Recreation

Trust for Public Land – Power of Partnerships

- 69 parks
 - 240 miles of trails
 - 118 square miles
 - 350,000 residents
-
- 43% of new parks in last 10 years provided by developers
 - 125 acres of parkland
 - \$100 million value
 - Developer only since 2015
 - 3 parks this year adding 32 acres



Housing Developers

- Municipal Code
- Park Agreements
- Design Guidelines
- Permit Requirements
- City Attorney Involvement

- Negotiation Experience
- Developer Pushback
- Permit Thresholds

**Learning Curve and the
Path Forward**



Contacts

Erin.Reiswerg@cityofhenderson.com

Kevin.sigman@cityofhenderson.com



OKC PARKS



OKC IS BIG



622



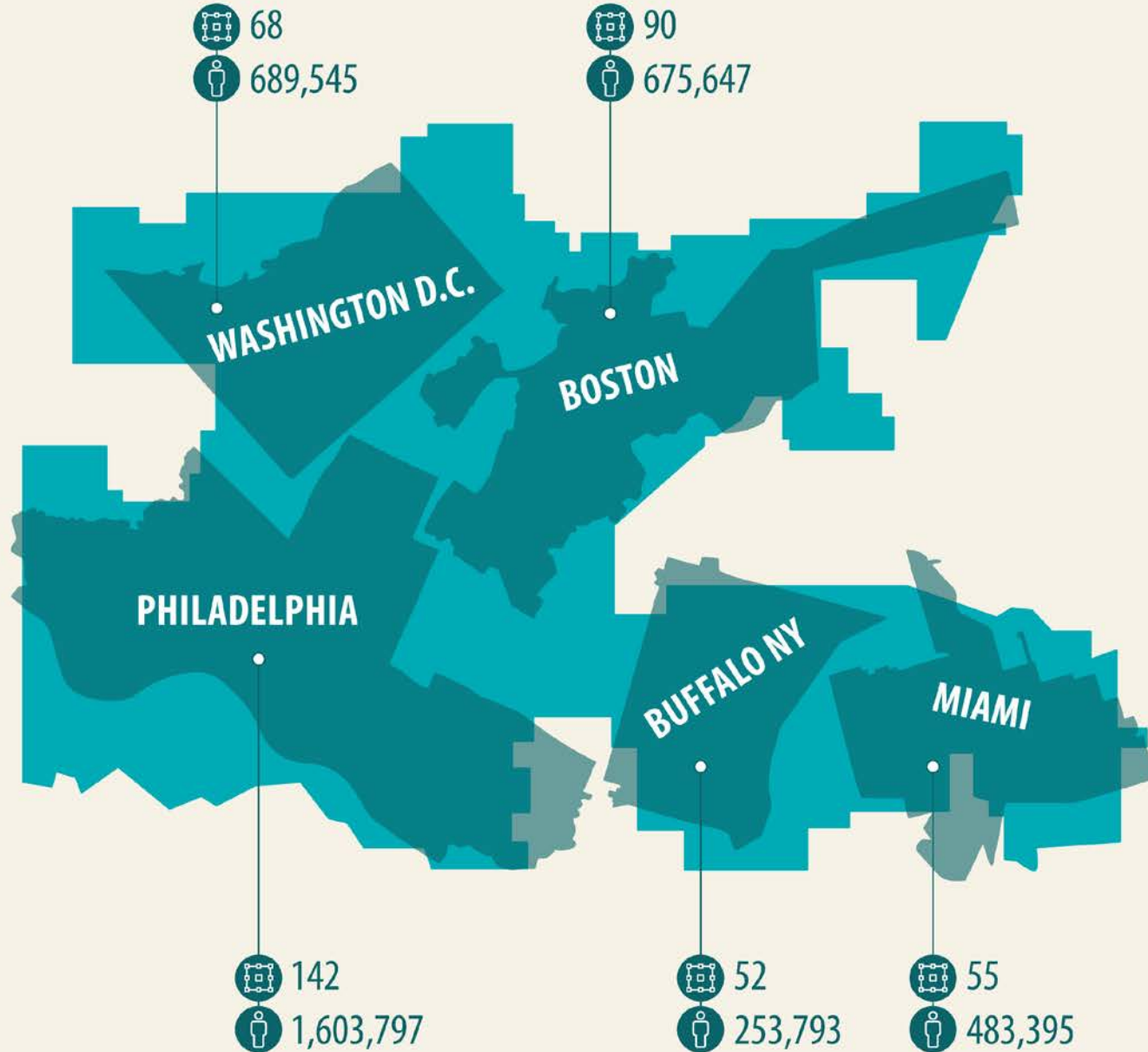
676,492



land area in sq. miles

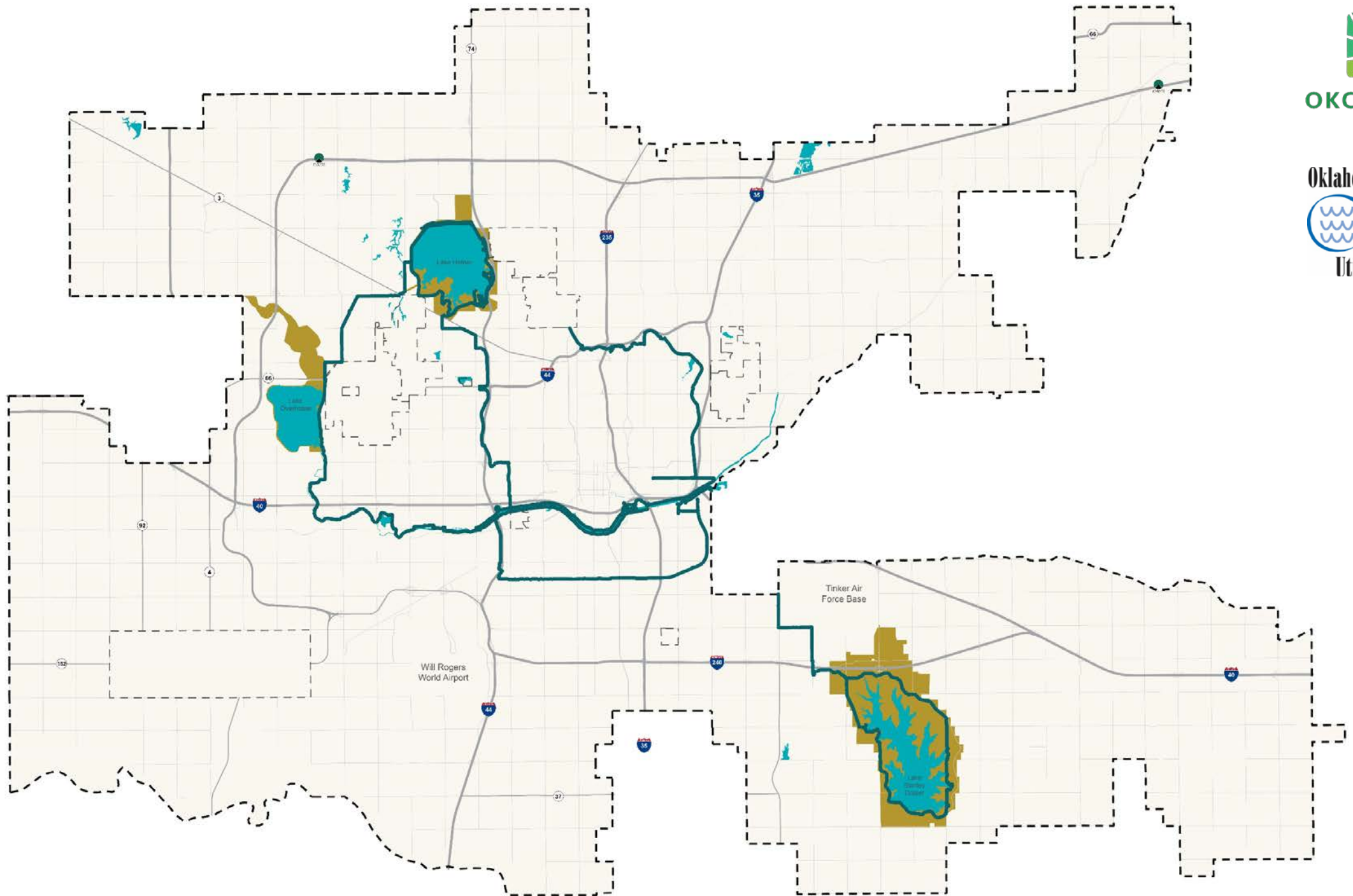


population





OKC PARKS





Mayor David Holt ✓ @david... · Apr 24 ...

Lake Hefner was built for one reason and one reason only - to drink! BUT, through the decades a seemingly infinite number of secondary uses have come to develop around this beautiful body of water. It was my pleasure today to help celebrate one of them at Splash Day. (1/2)



The city has planted **wildflowers** along **Hefner road** (and a median on Lake **Hefner Drive**) as a possible strategy to reduce mowing along the dams and to serve as pollinators gardens. They are beautiful.



Just like that... and colors are popping around **Lake Hefner** 🍁🍂



TravelOK.com ✓ @Tra... · Sep 9, 2020 ...

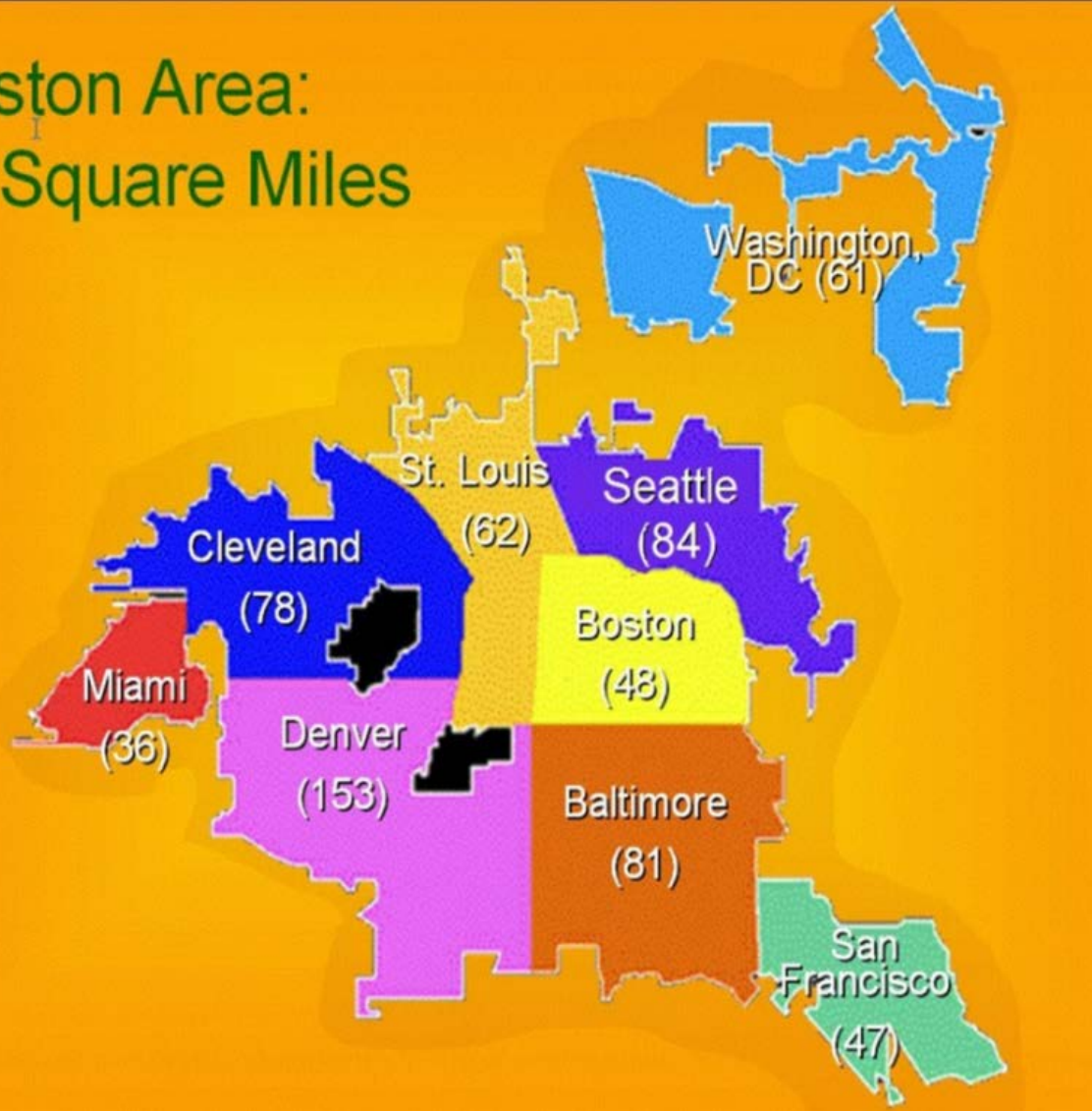
Don't let the urban landscape of central Oklahoma fool you - this region has incredible angling options! From Lake Thunderbird to **Lake Hefner**, explore this diverse area on the Oklahoma Fishing Trail! [#FishinOK](#)
bit.ly/CentralLoop



Beautiful ride this evening on the West River Trail up to Lake **Overholser**. [#okcrivertrails](#)
[#okc](#)



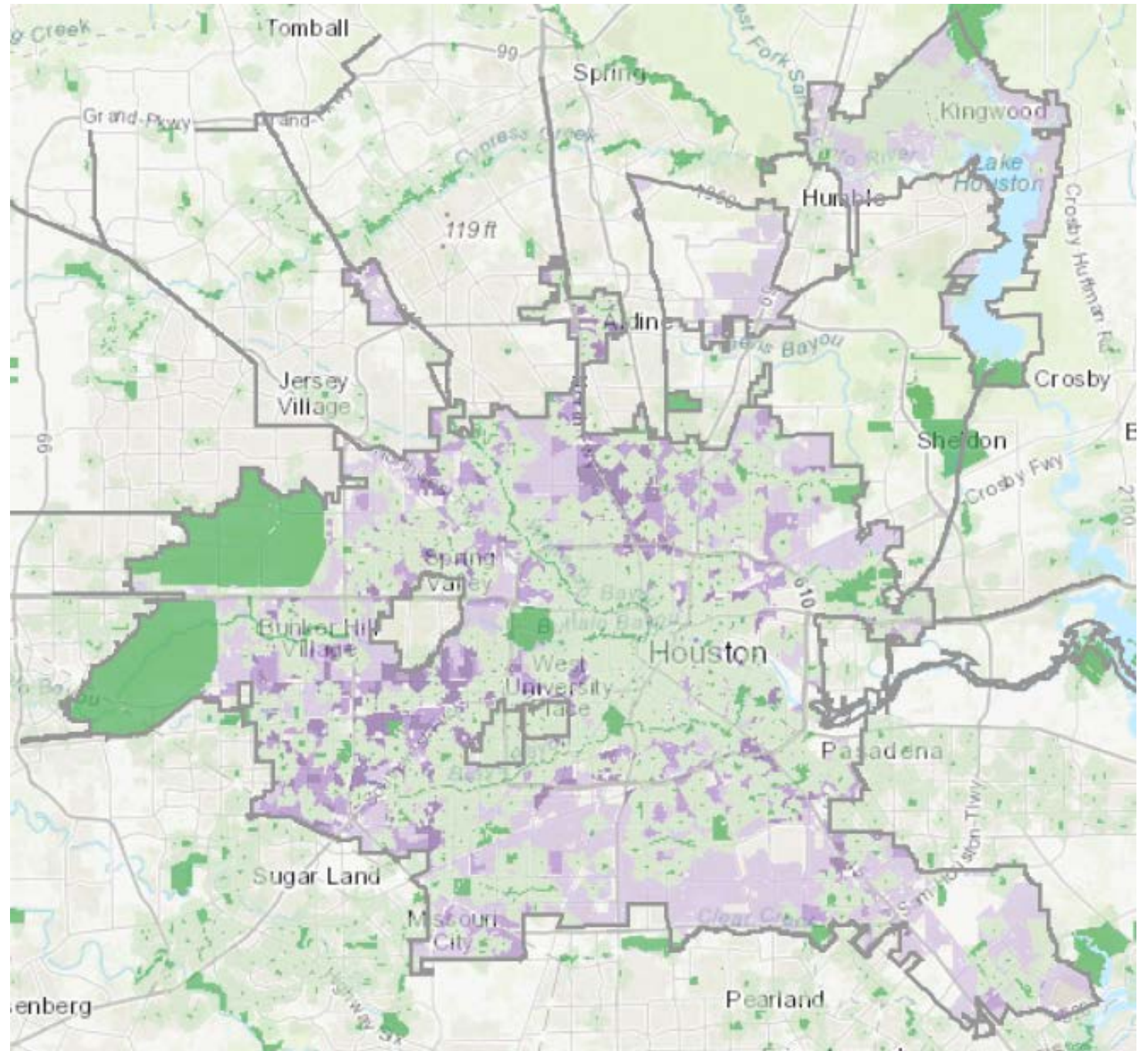
Houston Area:
656 Square Miles



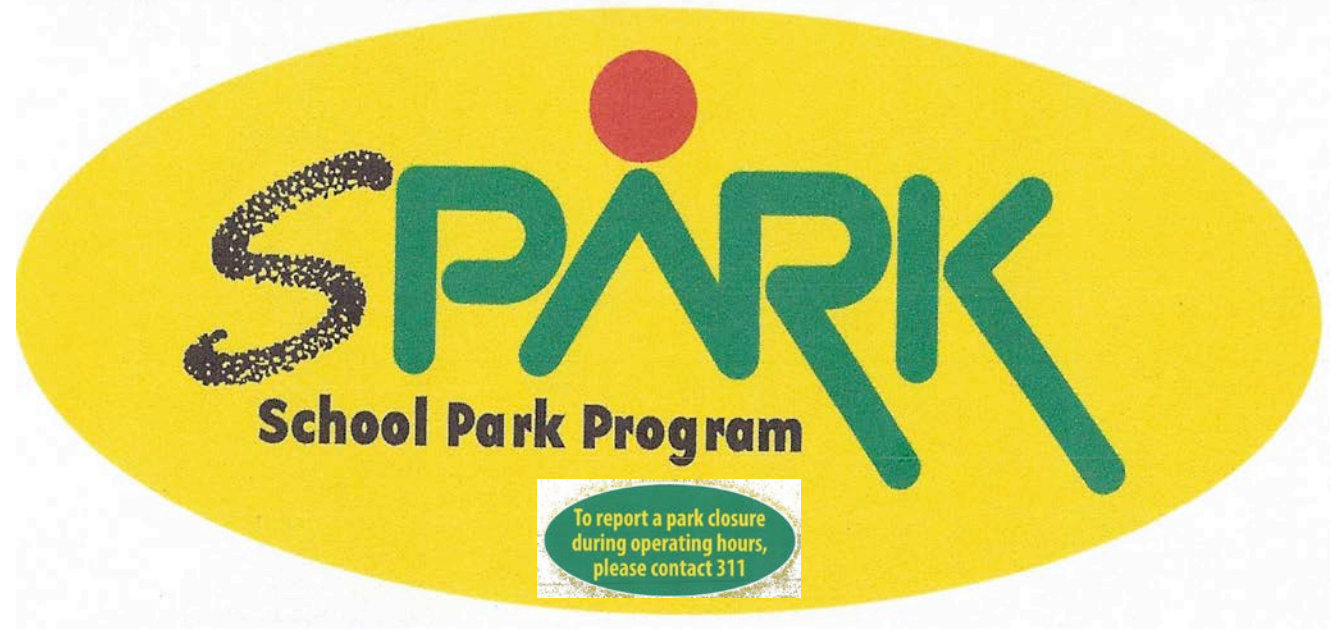
City of Houston Profile

- Population: 2,325,353
- 669 Parks
- 42,326 park acres
- Pop. Served: 1,381,935
- 60.5% served (10-Min. Walk)
- Houston's Park Score: 70th

The Trust for Public Land Parkscore®



- Started in 1983, result of Green Ribbon Committee – need for more park space
- Agreement with Independent School Districts (work with 17 of 23 ISDs in Houston) for 10-year period
- ISDs/schools maintain parks
- SPARK Committee designs park – unique
- Public art component



SPARK Park Hours of Operation
 Mon. - Fri. After school hours until dusk
 Sat. & Sun. 7:00 AM until dusk

SPARK Parque Horario de operación
 De lunes a viernes después del horario escolar
 hasta el anochecer.
 Sáb-Dom 7:00 AM hasta el atardecer



**Dogs are not allowed in
 children's play areas or on
 athletic fields.**

**Los perros no están permitidos en
 áreas de juego o en los
 campos deportivos.**

Contact Info:

Elizabeth Howley

Elizabeth@sparkpark.org

Office: 832-393-0910

Kathleen Ownby

Kathleen@sparkpark.org

Office: 832-393-0911

