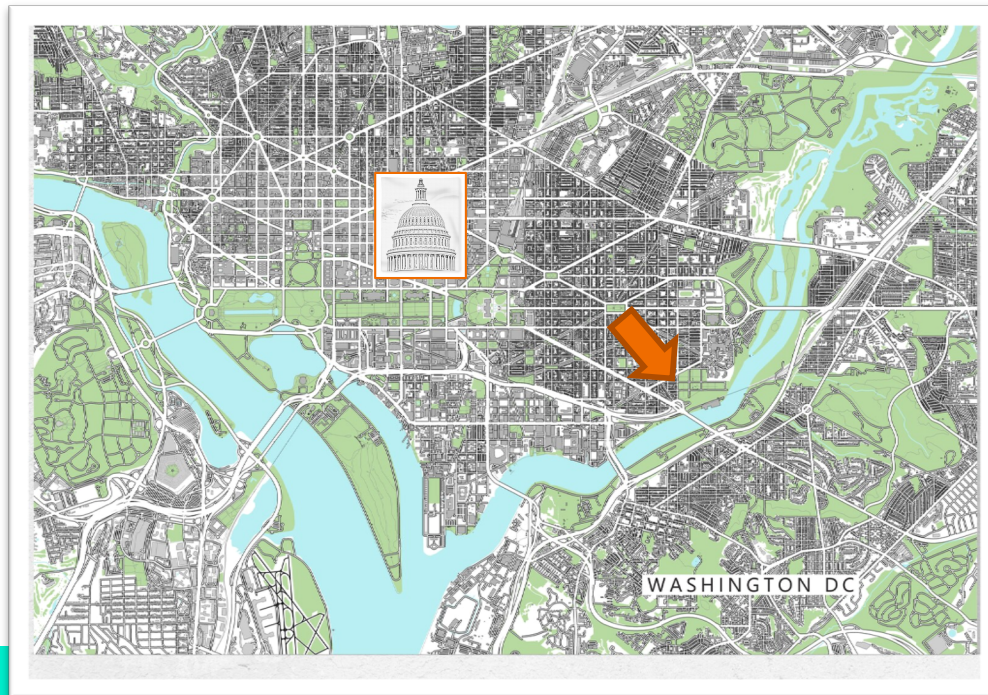
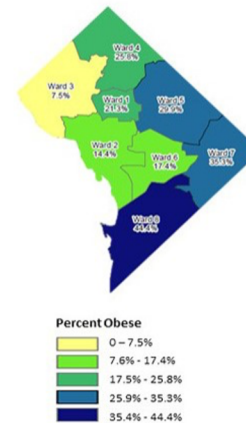


# Meaningful Park Engagement: Making Park Experiences Count for Stressed Communities

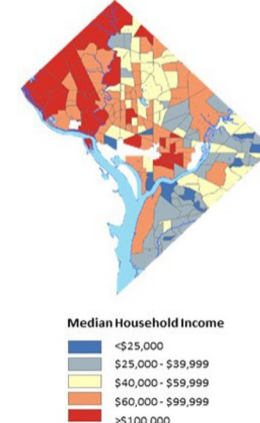
Supporting trauma informed engagement in Anacostia Park.



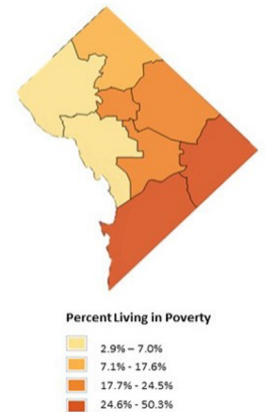
DC Obesity Rates  
2010 – By Ward



DC Median Household Income  
2011 – By Census Tract



DC Childhood Poverty Rate  
2014 – By Ward



# What it means to be a "friend" of Anacostia Park



## PHYLLIS NELSON

### OPERATIONS MANAGER

#### CORE SKILLS & EXPERIENCE

- ADDICTION RECOVERY ADVOCATE
- COMMUNITY ENGAGEMENT
- CONNECTING W/ STRESSED AUDIENCES
- YOUTH/TEEN ENGAGEMENT

Working in Anacostia Park has helped me better myself. It gives me the chance to use my people skills and life experience to connect with park users in new ways that make a difference.

#### PARK GOALS

To help meaningfully engage visitors impacted by trauma, and protect it as a safe space for all.

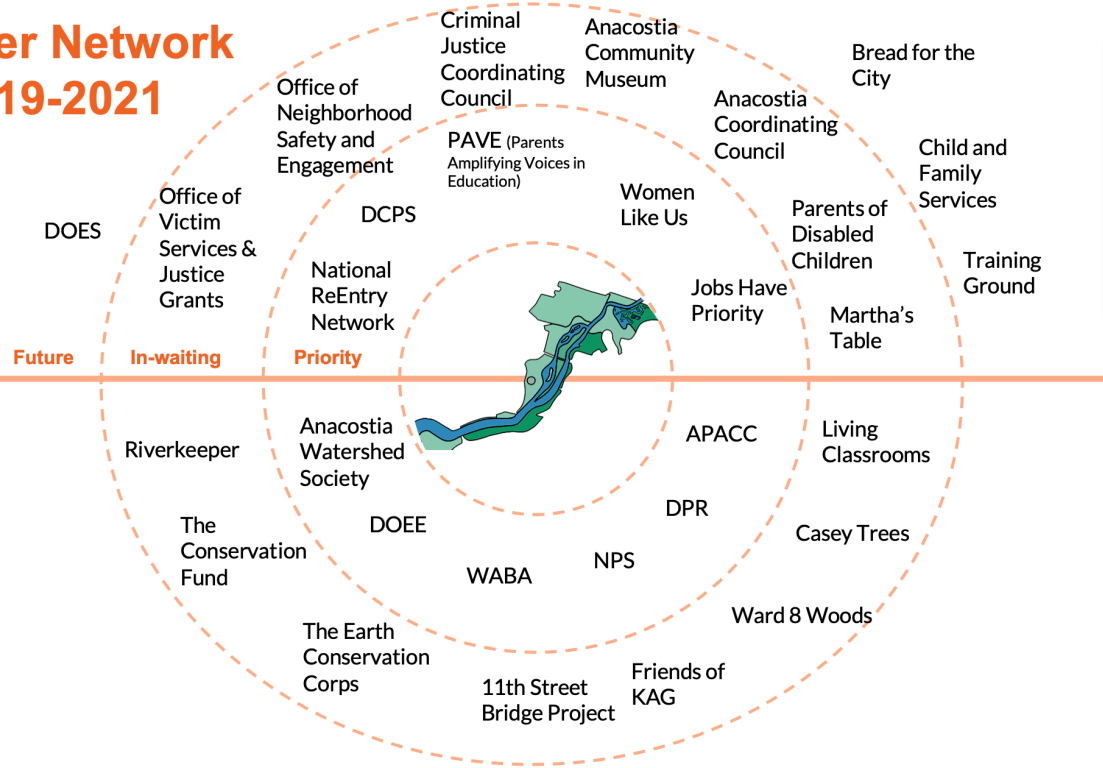
	COMMUNITY	ANACOSTIA PARK
CHALLENGES	<ol style="list-style-type: none"> <li>1. Crime</li> <li>2. Employment</li> <li>3. Drugs</li> <li>4. Mental Health</li> <li>5. Community Economics</li> <li>6. Youth Engagement</li> </ol>	<ol style="list-style-type: none"> <li>1. Poor Restrooms</li> <li>2. Trash / Litter</li> <li>3. More/Better Playgrounds</li> <li>4. Invasive Plants/Animals</li> <li>5. More Picnic Tables/Grills</li> <li>6. NPS Understaffed</li> </ol>
POWERS	<ol style="list-style-type: none"> <li>1. Schools</li> <li>2. Youth</li> <li>3. Elders</li> <li>4. Artists</li> <li>5. Anti Crime Groups</li> <li>6. Relationships</li> </ol>	<ol style="list-style-type: none"> <li>1. Open Green Space</li> <li>2. Bike / Walking Path</li> <li>3. Playgrounds</li> <li>4. Recreational Activities</li> <li>5. Peace &amp; Quiet</li> <li>6. Familiar /Historic Park</li> </ol>



# Partner Network 2019-2021

Community  
Partners

Environmental  
Partners



SOCIAL WELL BEING	SPIRITUAL HEALTH	MENTAL HEALTH	PHYSICAL HEALTH
<ul style="list-style-type: none"> <li>• Family Reunification Circles</li> <li>• Restorative Justice Circles</li> <li>• Family Cookouts</li> <li>• River Tours</li> <li>• Anacostia Park Events</li> <li>• "Groupivities"</li> <li>• Education Programs</li> </ul>	<ul style="list-style-type: none"> <li>• Family Reunification Circles</li> <li>• Restorative Justice Circles</li> <li>• Mourning Space</li> <li>• Peace Efforts</li> </ul>	<ul style="list-style-type: none"> <li>• Walking /Talking Groups</li> <li>• Recovery / Support Walking Groups</li> <li>• Running Groups</li> <li>• Forest Bathing</li> <li>• Yoga</li> <li>• Meditation</li> </ul>	<ul style="list-style-type: none"> <li>• Bike Riding, Tours</li> <li>• Field Games</li> <li>• Sports</li> <li>• Skating</li> <li>• Walking Groups</li> <li>• Running Groups</li> <li>• Yoga /Mediation</li> <li>• Swimming</li> <li>• Canoeing</li> <li>• Kayaking</li> </ul>

# TPL Community of Practice

## Increasing “Access” through a Holistic Lens

Amarre Negussie, Recreation Supervisor

Colby Fangman, Park Planner II

Janis Steele, Recreation Manager

Daniel Calvert, Development and Planning Administrator



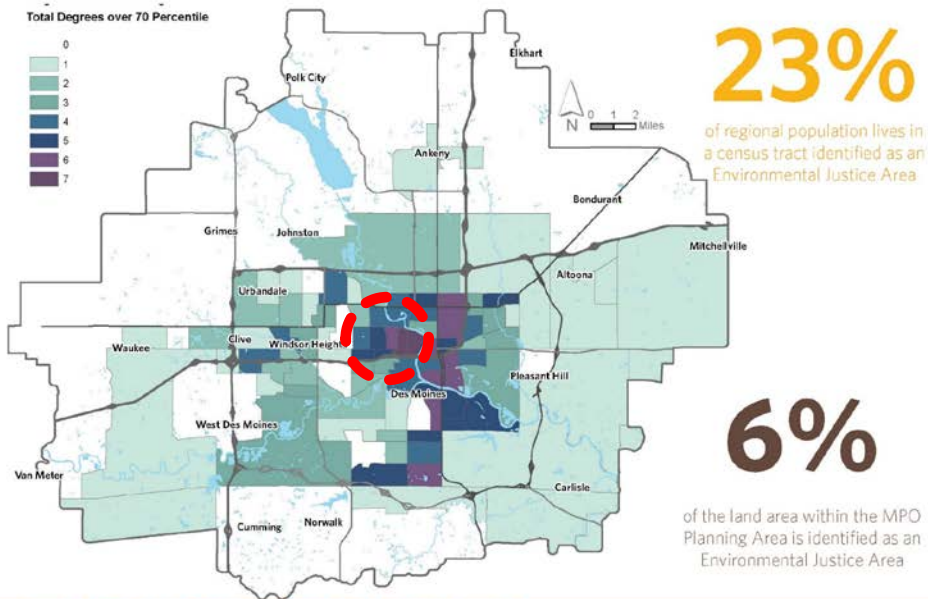


# Increasing “Access” through a Holistic Lens - JUSTIFICATION

## IDENTIFYING EJ AREAS

### Regional Degrees of Disadvantage

The map below shows the overlaying of each degree of disadvantage throughout the MPO planning area at the census tract level. The darker the shade of purple in this map represents a higher degree of disadvantaged populations. While concentration is highest in the central urban areas, outlying communities also have disadvantage populations, especially so near clusters of multi-family housing units.



## FEDERAL MANDATES

“No person in the United States shall, on the ground of race, color, or national origin be excluded from participation in, be denied the benefits of, or be subjected to discrimination under any program or activity receiving Federal financial assistance.”

- TITLE VI OF THE CIVIL RIGHTS ACT OF 1964

“Each Federal agency shall make achieving environmental justice part of its mission by identifying and addressing, as appropriate, disproportionately high and adverse human health or environmental effects of its programs, policies, and activities on minority populations and low-income populations.”

- EXECUTIVE ORDER 12898, FEDERAL ACTIONS TO ADDRESS ENVIRONMENTAL JUSTICE IN MINORITY POPULATIONS AND LOW-INCOME POPULATIONS, 1994

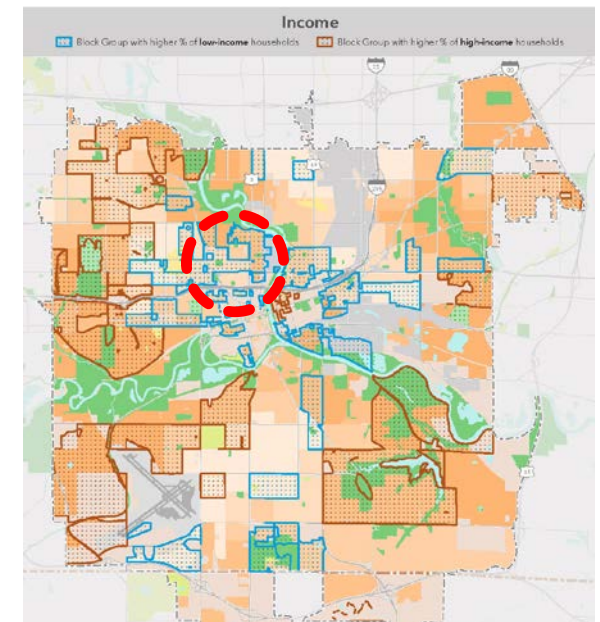
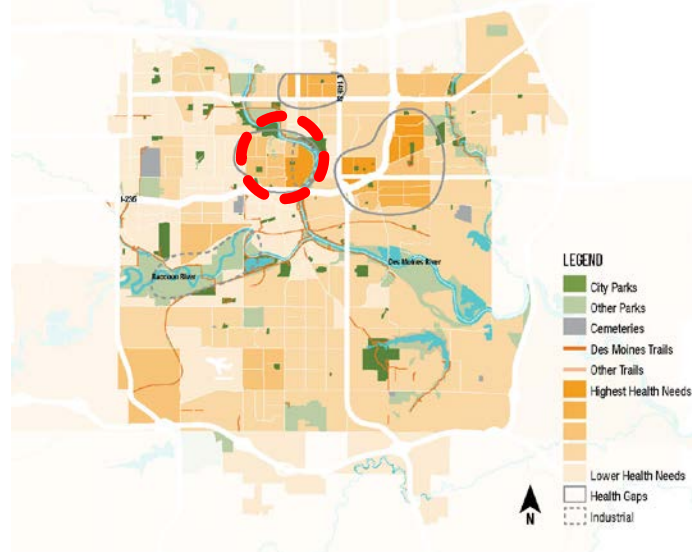
### EQUITY LENS MAP: AREAS WITH GREATER EQUITY NEED (POVERTY, RACE POPULATION DENSITY AND CRIME)

Polk County, City of Des Moines, RDG ESRI GIS and US Census Data



### HEALTH SHED MAP: HIGHER PROPENSITY FOR HEALTH PARKS

Polk County, City of Des Moines, RDG and CDC GIS





# Increasing “Access” through a Holistic Lens - DEVELOPMENT

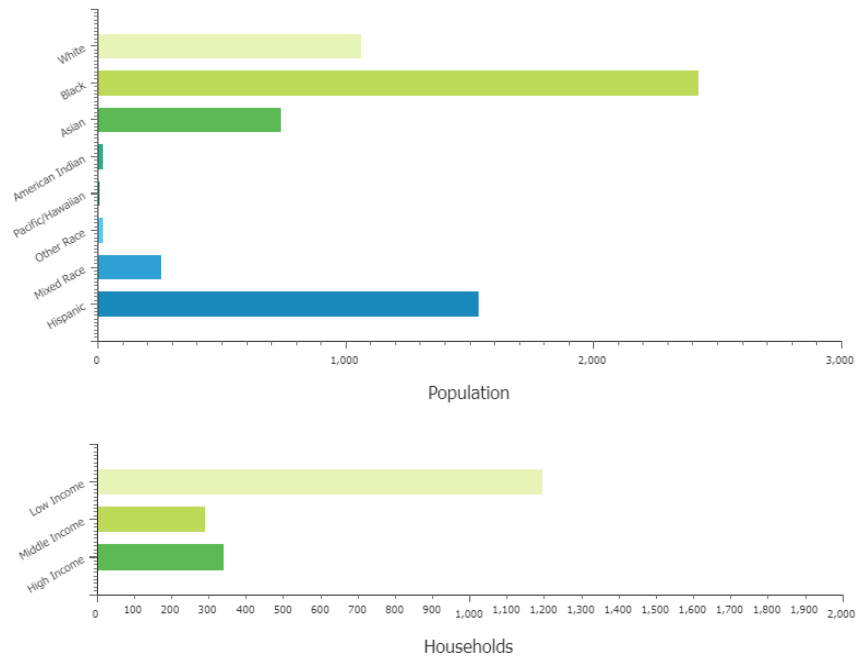
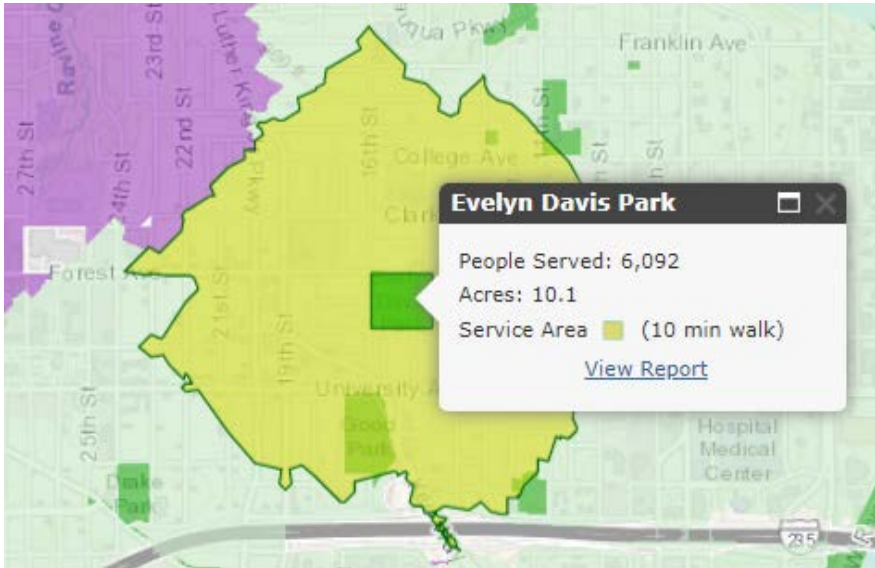
## Central Place Levee Trail Route & Neighborhood Spurs

Phase 1 Northern Terminus: 1901 2nd Avenue, Des Moines, IA 50314  
Phase 1 Southern Terminus: 821 W River Dr, Des Moines, IA 50309





Increasing "Access" through a Holistic Lens - PROGRAMMING







Lake Erie

2015

- Wiregrass Lake Metropark
- Fallen Timbers Battlefield
- Westwinds Metropark

2016

- Middlegrounds Metropark

2020

- Cannonball Prairie Metropark
- Glass City Metropark
- Manhattan Marsh Metropark





**METROPARKS  
TOLEDO**

