

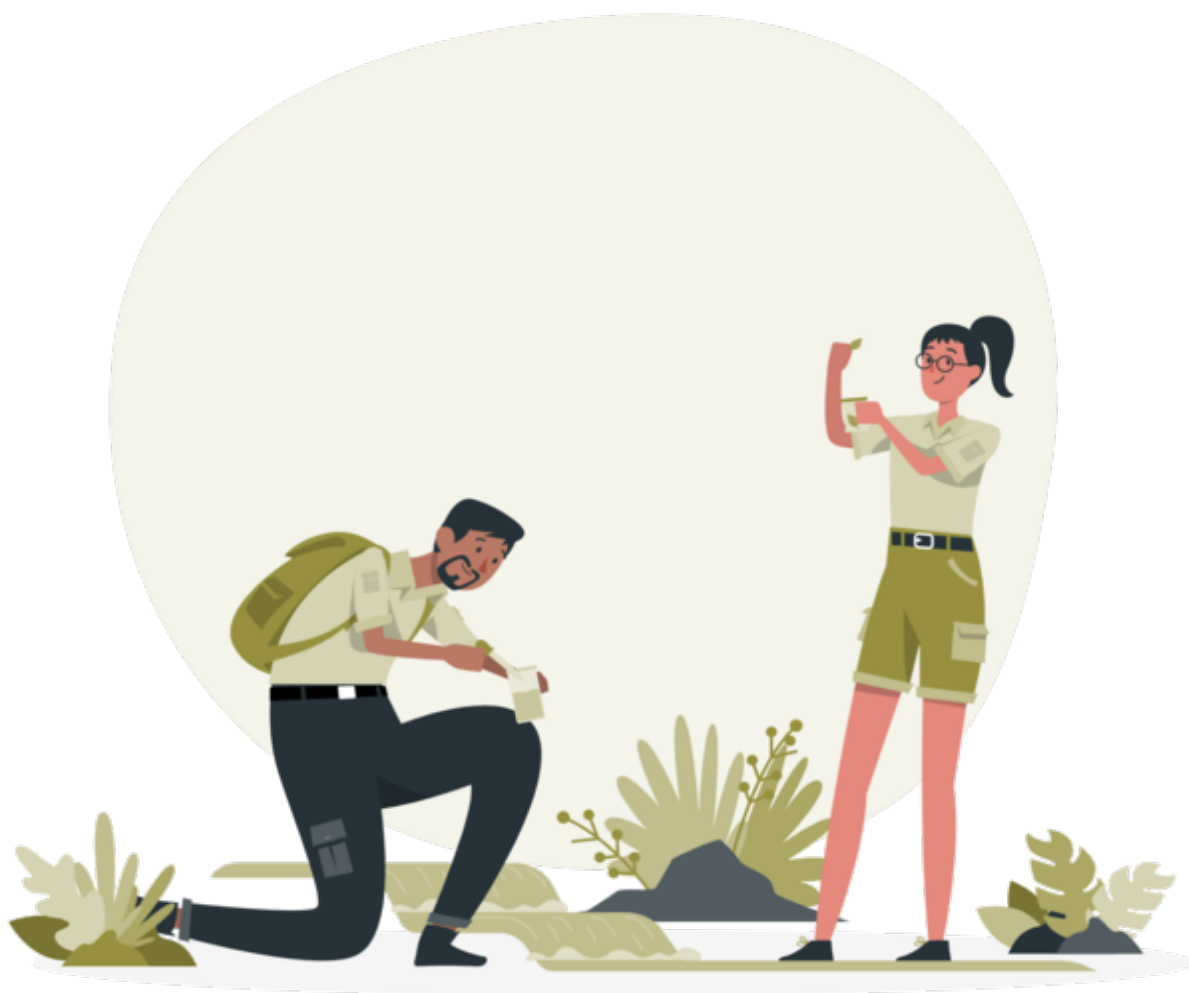
# Natural Climate Solutions: *Approaching the Earth As Ally*

Brett KenCairn  
Natural Climate Solutions Team Lead  
Climate Initiatives, City of Boulder,  
CO  
Director, Nature-based Climate  
Initiatives



**NATURE-BASED**  
CLIMATE SOLUTIONS





# Managing Urban Landscapes For Climate Action: A Strategy Development Guide

*developed by:*

Nature-base Climate Solutions

<https://naturebasedclimate.solutions/managing-urban-landscapes-for-climate-action-strategy-development-guide>

**NATURE-BASED**  
**CLIMATE SOLUTIONS**

# Urban Landscapes & Organic Resources

Greenways & Riparian Areas

Urban Forests

Agricultural Systems

Parks & Grassland (Turf)

Organics Management

Aquatic Systems



# Core Climate Action Objectives

## Climate Mitigation



Carbon Reduction and  
Sequestration

## Adaptation & Climate Resilience



Change Management

## Equity



Intersectional Benefits



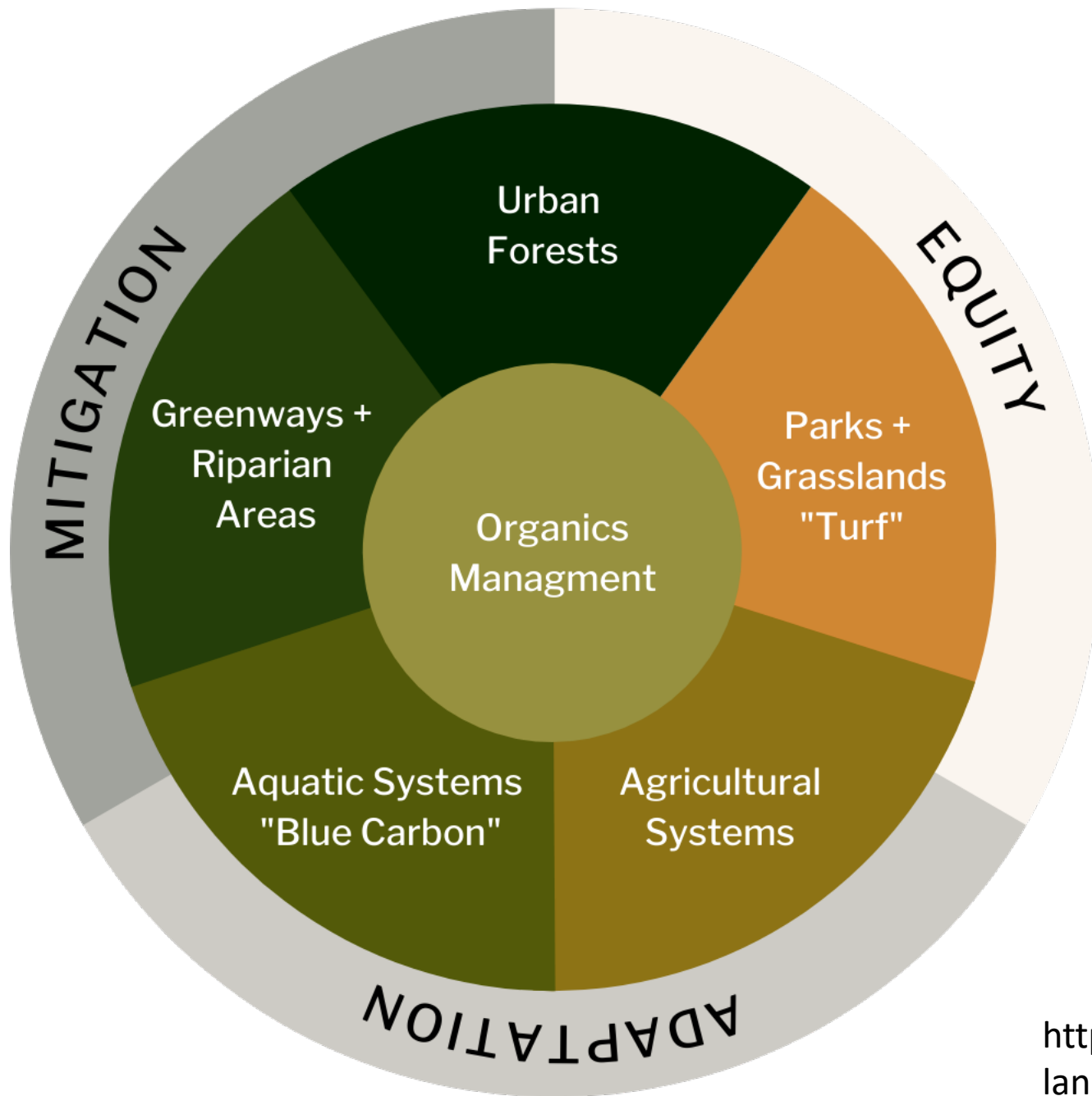


# Cooling Corridors in Medellin, Columbia

Already achieving 2°C  
reduction

<https://www.weforum.org/videos/this-colombian-city-is-planting-giant-corridors-of-trees-to-cool-down-and-fight-climate-change>





## Framework for Natural Climate Solutions

**NATURE-BASED**  
CLIMATE SOLUTIONS

<https://naturebasedclimate.solutions/managing-urban-landscapes-for-climate-action-strategy-development-guide>

# Strategy Development Guide

## Step 1: Align with Existing Plans



## Step 3: Conduct Opportunity Assessment



## Step 2: Opportunity Identification

# TREES FOR COMMUNITY RECOVERY

JOBS | HEALTH | EQUITY



## WHY WE MUST ACT NOW

The importance of urban trees is undisputed. Urban and community forests are critical infrastructure in addressing the combined impacts of urban heat, air, toxic pollution and climate change. They also create good paying jobs and hold the key to more economic opportunity.

- With a projected 10-fold increase in heat-related deaths in the eastern U.S. by 2050, trees are the most effective means of combating urban heat islands, preventing an estimated 1,200 heat-related deaths and countless heat-related illnesses each year.
- Trees in metropolitan areas and communities across the country absorb 822,000 metric tons of air pollutants and help prevent 575,000 cases of acute respiratory illnesses, such as asthma, annually.





# Local, Regional & National Urban Forestry Expansion Campaign

The Inflation Reduction Act (IRA) includes \$1.5B in funding through the USFS Urban & Community Forestry Program

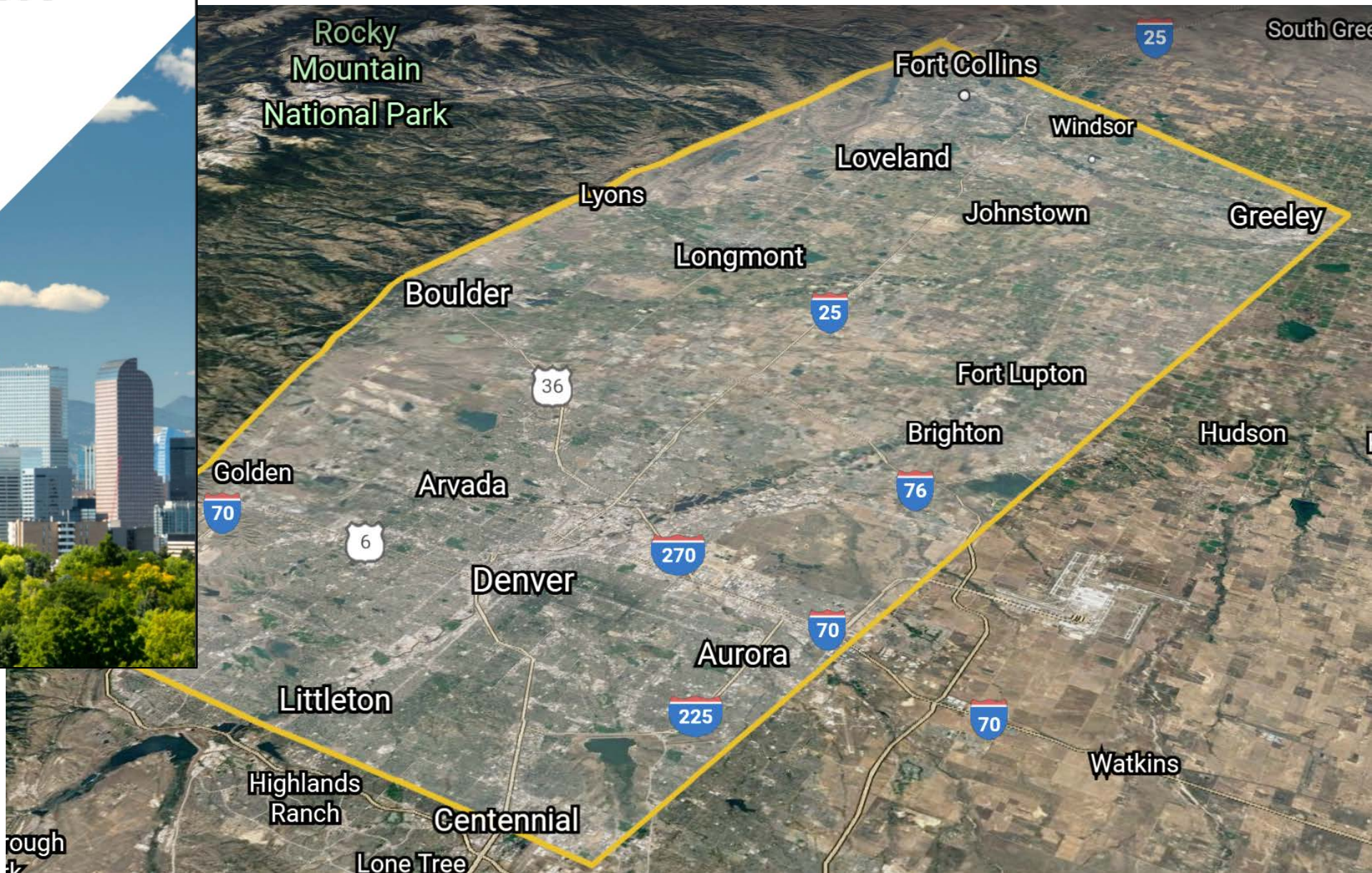




# COLORADO FRONT RANGE URBAN FORESTRY EXPANSION STRATEGY

JULY 2021

## FULL REPORT







# Campaign Overview

03/30/22

***“Supporting and mobilizing the community to regenerate our soils, trees, and habitats for a resilient community, climate and future”***





# Three Action Areas



**Connected Canopies**



**Pollinator Pathways**



**Absorbent  
Landscapes**



## Connected Canopies

### 2030 Targets

- Plant 20,000 trees
- Capture 50,000 mtCO<sub>2</sub>/yr
- Reduce temperatures by 5-10 degrees F vulnerable areas







# Pollinator Corridors

## 2022 Preliminary targets

- Train 30+ Pollinator advocates
- Develop corridors plan
- Integrate with urban heat analysis







# Urban, Natural and Working Land Rehydration (Absorbent Landscapes)



## 2030 Targets

- Regenerate 5,000 acres
- Absorb 40,000,000 gals water/yr

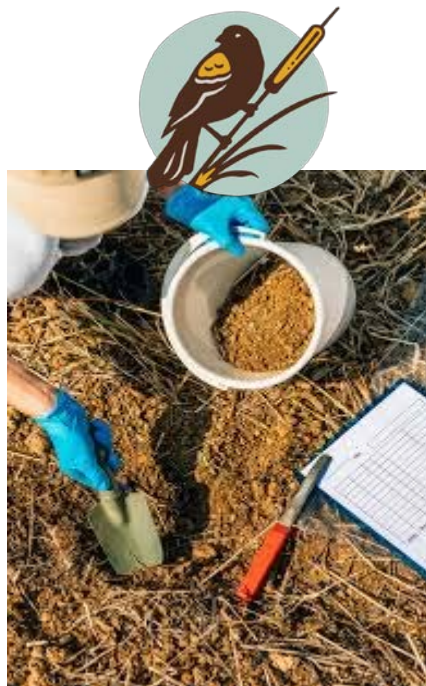




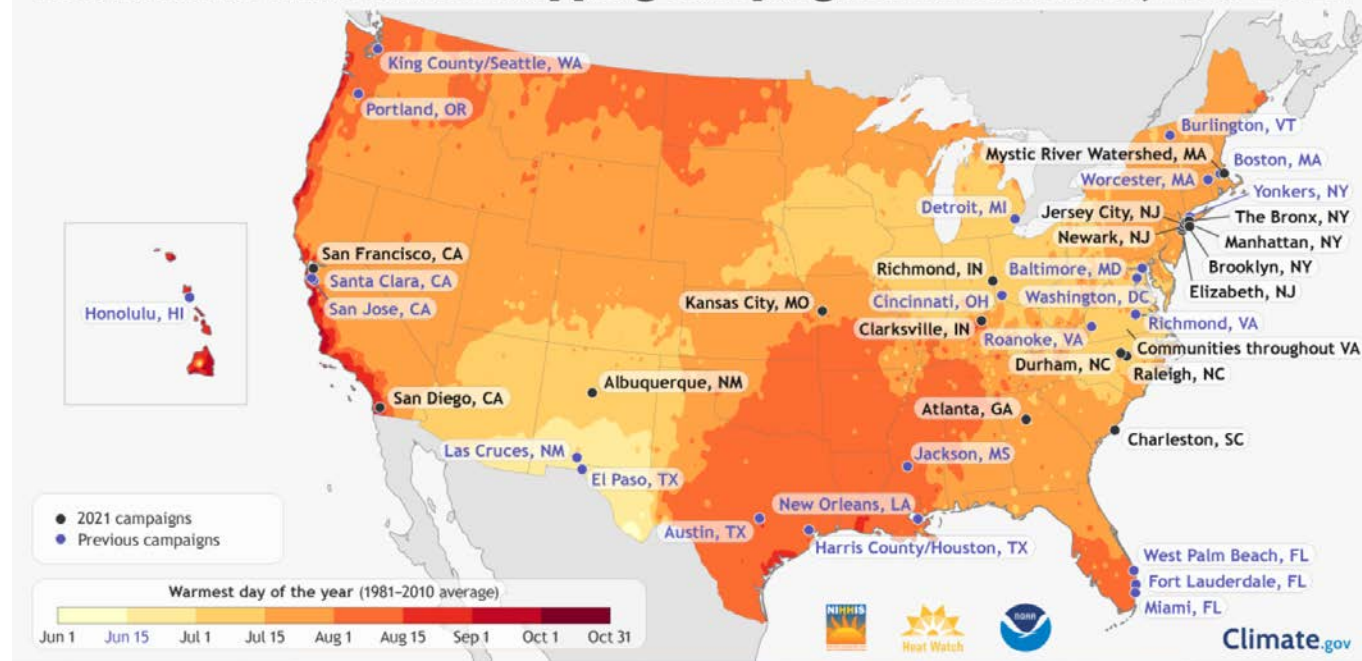
## Other Actions: *Observe & Learn*

### Citizen Science Opportunities

- 2022 NOAA Urban Heat Mapping Campaign
- Pollinator survey
- Land condition assessment



### NOAA Urban Heat Island Mapping Campaigns: All Locations, 2017-2021







# Other Actions: *Produce & Share*

## Produce Regeneration Resources:

- Plants
- Compost
- Biochar







# Cool Boulder -- A Community Partnership

The Cool Boulder Campaign, launching this spring 2022, has already begun collaborating across many City Departments and organizations—of all sizes—and we want to partner with yours, too! [Sign Up →](#)

Initial partners include:

[Bee Chicas](#)

[Boulder JCC](#)

[Boulder Housing Partners](#)

[Boulder Valley Rotary](#)

[Butterfly Pavillion](#)

[Classrooms 4 Climate Action](#)

[Community Fruit Rescue](#)

[CSU Extension](#)

[CU Masters of the Environment](#)

[Davey Resource Group](#)

[Drylands Agroecology Research](#)

[Eco-Cycle](#)

[BVSD Eco-Warriors](#)

[Endangered Species Coalition](#)

[Goss Grove Neighborhood Association](#)

[Growing Gardens](#)

[Harlequin's Gardens](#)

[Left Hand Watershed Center](#)

[National Oceanic & Atmospheric Administration](#)

[People & Pollinators Action Network](#)

[PLAY Boulder Foundation's Tree Trust](#)

[Resource Central](#)

[University of Colorado's Earth Lab](#)

[We Love Trees, Inc.](#)

[Wildlands Restoration Volunteers](#)

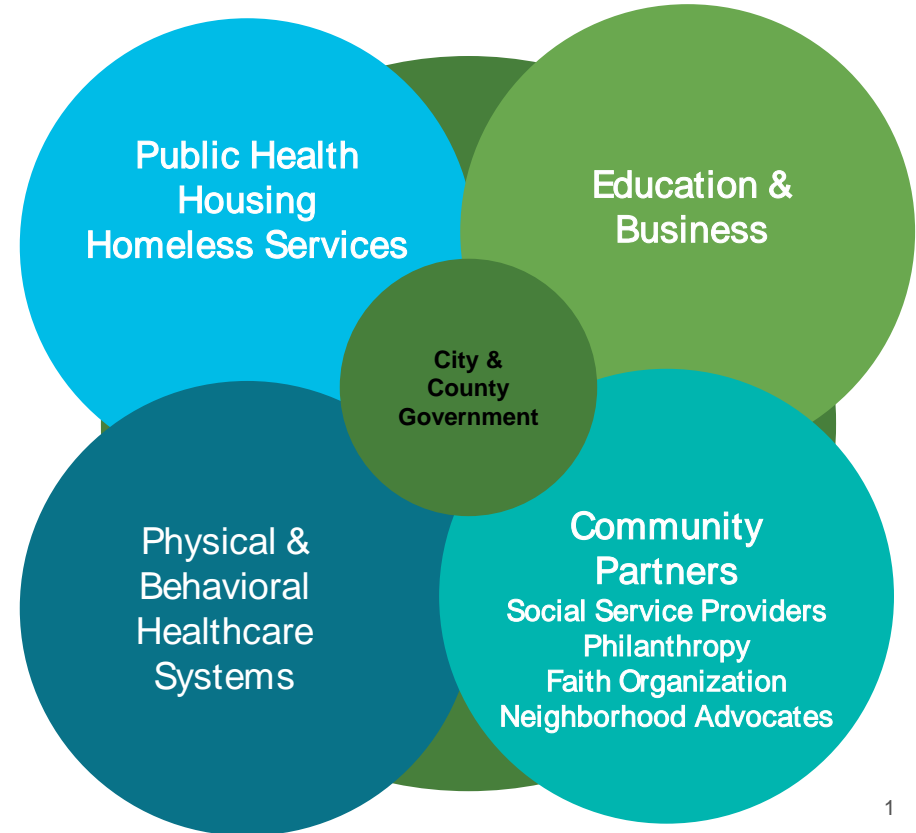
[Xerces Society](#)

[Your Neighborhood Christmas Tree Farm](#)



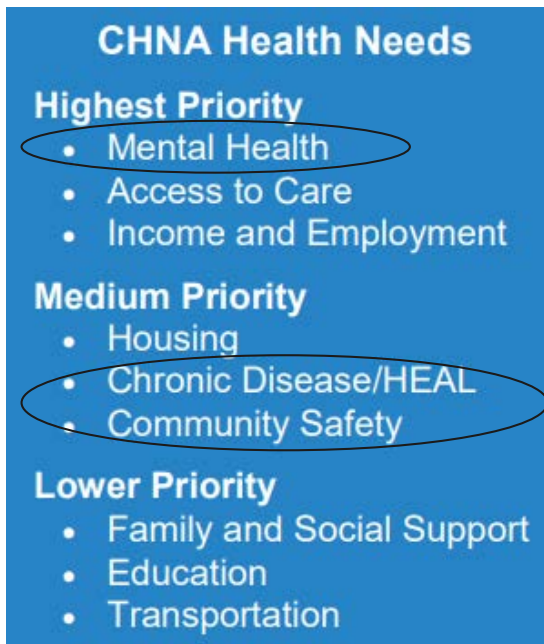
# Strong Collaboration for Collective Impact

## CHNA Collaborative





# Parks and Greenspace - A priority in San Joaquin!



A Focus on  
14 Priority  
Neighborhoods

## 3 Priority Health Needs, 1 overarching goal:

- Chronic Disease/Healthy Eating, Active Living (HEAL)
- Mental/Behavioral Health (including substance use)
- Community Safety

**Goal:** Make parks in priority neighborhoods appealing and easy to use to create equitable and safe opportunities to improve physical, mental and community well being.

# Leveraging resources for lasting impact

**Overall Goal:** Make parks in priority neighborhoods appealing and easy to use to create equitable and safe opportunities to improve physical, mental and community well being.

## Key Strategies

Change or enhance implementation of existing **county and city park policies and systems** to increase park usage in Priority Neighborhoods

**Park beautification & infrastructure improvements,** prioritized by community members to increase park safety and use in 2-4 Priority Neighborhoods

**Park programming** improvements prioritized by community members to increase park safety and use in 2-4 Priority Neighborhoods

**Outreach and communications to promote parks and programming** for physical, mental and community wellbeing in selected Priority Neighborhoods