



Power of Partnerships for Strong Parks and Systems Change

10-Minute Walk City
Community of Practice

Session 5
July 13, 2022





Opening poll

____ % of entities surveyed for ParkScore 2022 were non-municipal, non-city parks departments.

Agenda

Topic: Power of Partnerships for Strong Parks and Systems Change

Agenda

- Moderated Panel Discussion
 - Henderson, NV
 - Oklahoma City, OK
 - Houston, TX
- Breakout groups
- Closing



Today's session

How to leverage partnerships to increase access to parks and maximize community benefits?

Breakout Groups

- TPL facilitator in each group
- About 40 minutes
- Videos + Mics on



Breakout Groups

Topics

1. **Schoolyards** - How to partner + models for stewardship + maintenance
2. **Schoolyards** - Activation, community engagement, placemaking
3. **Utilities/water district land** - Models for unlocking land + coordinating maintenance + stewardship
4. **Partnership models** - Grant applications + projects
5. **Private developers** - Standards + strategies to increase access
6. **Friends of groups** - Investing in under-resourced neighborhoods

Each group will discuss

1. What is the current status of this partnership type in your city?
2. Share your city's goals for this partnership strategy. What are key challenges or gaps you need to address to move this partnership forward?
3. Share examples and success stories from this partnership strategy. Do you have helpful resources, case studies, best practices to share with other cities?



Closing poll

What is one approach or strategy from today's discussion that you are the most excited to bring to your city?

Upcoming workshops

Sept 14- Healthy and Resilient Communities: Long-Term Park Impacts



Thank you + Contact Us

Christina Jang

Program Manager, 10-Minute Walk

christina.jang@tpl.org

10MinuteWalk.org

@10MinWalk

Don't forget to take the exit survey!



HENDERSON™

Parks and Recreation

Trust for Public Land – Power of Partnerships

- 69 parks
 - 240 miles of trails
 - 118 square miles
 - 350,000 residents
-
- 43% of new parks in last 10 years provided by developers
 - 125 acres of parkland
 - \$100 million value
 - Developer only since 2015
 - 3 parks this year adding 32 acres



Housing Developers

- Municipal Code
- Park Agreements
- Design Guidelines
- Permit Requirements
- City Attorney Involvement

- Negotiation Experience
- Developer Pushback
- Permit Thresholds

**Learning Curve and the
Path Forward**



HENDERSON™

Contacts

Erin.Reiswerg@cityofhenderson.com

Kevin.sigman@cityofhenderson.com



OKC PARKS



OKC IS BIG



622



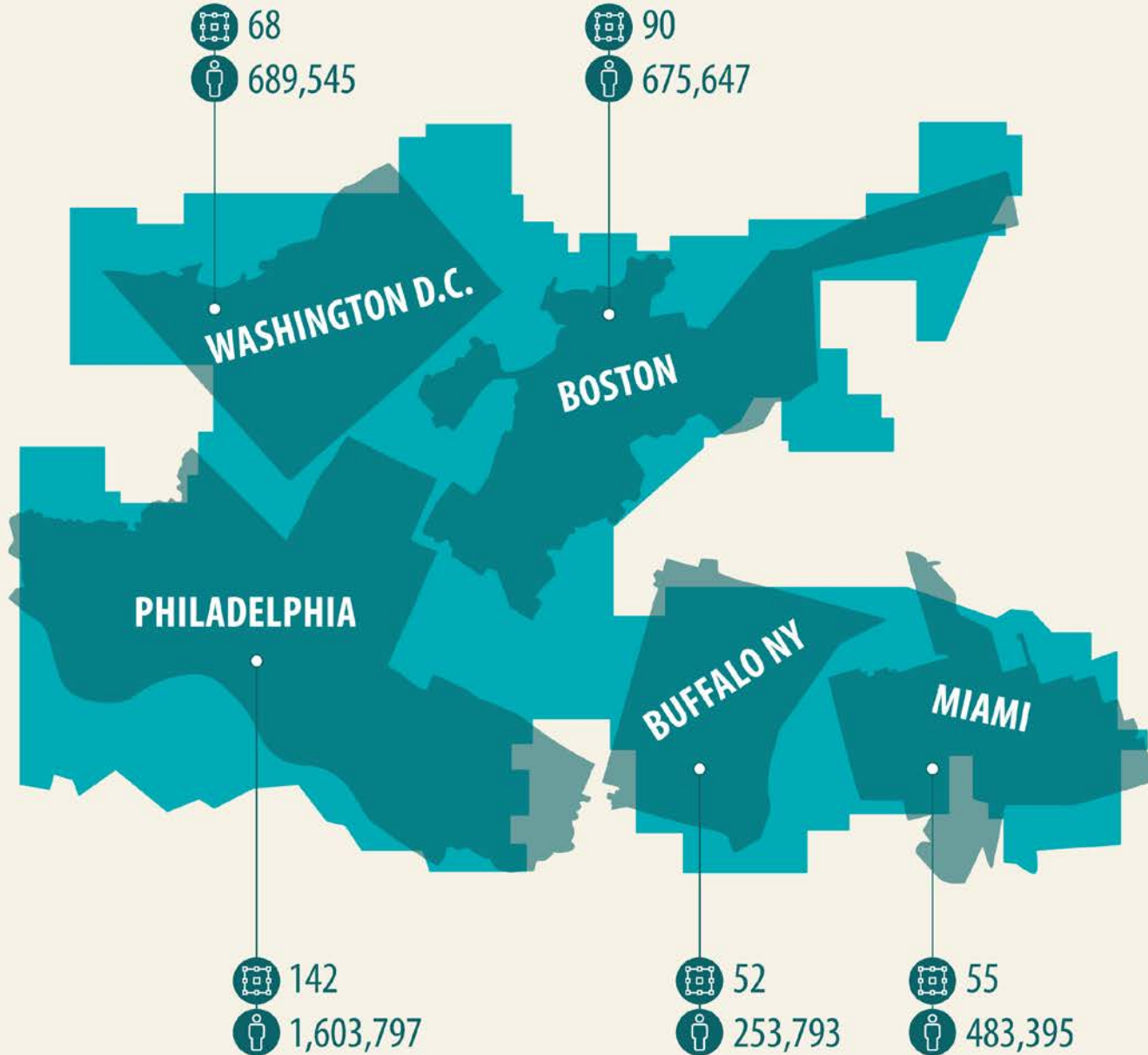
676,492



land area in sq. miles

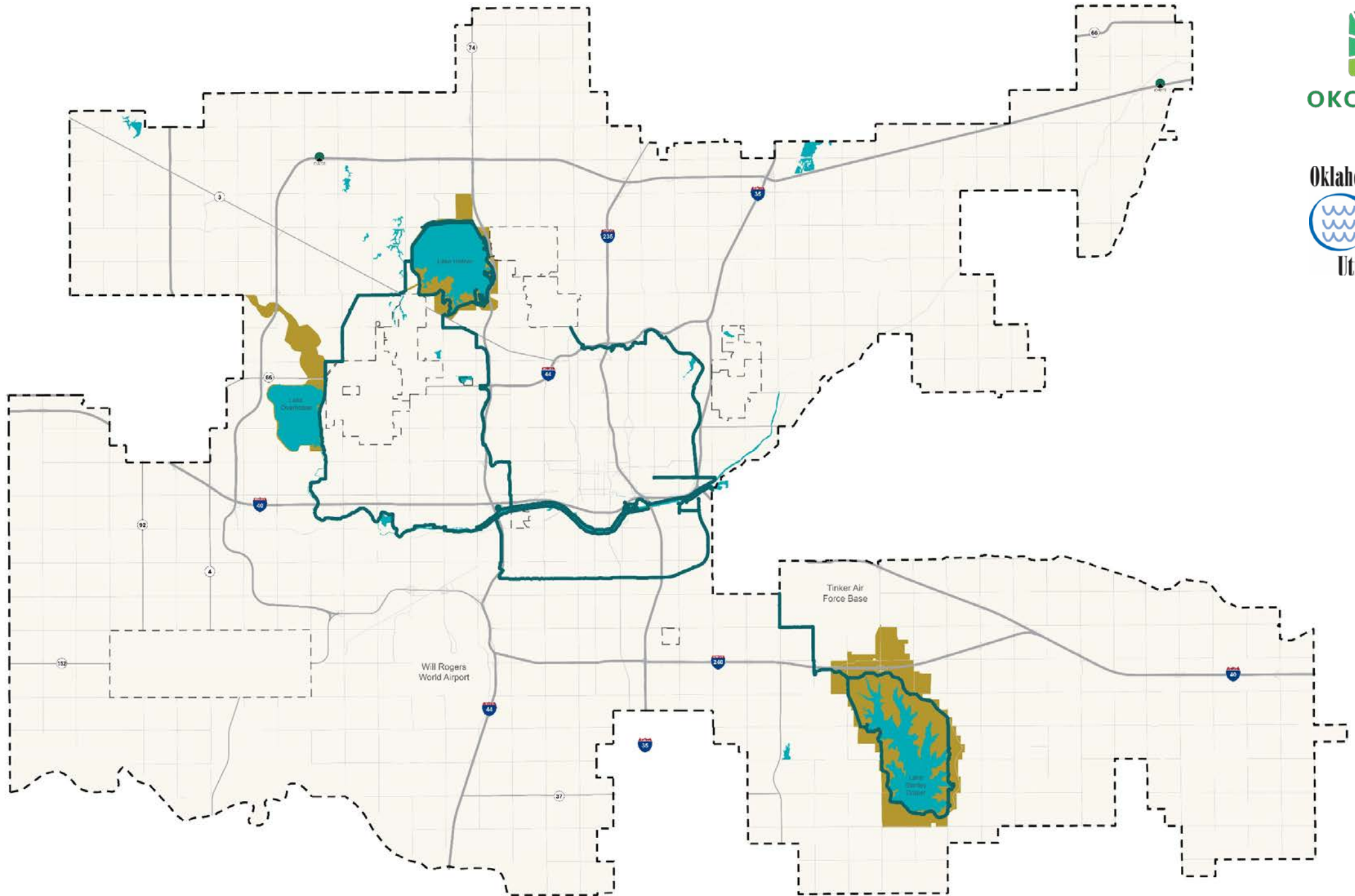


population





OKC PARKS





Mayor David Holt @david... · Apr 24 ...

Lake Hefner was built for one reason and one reason only - to drink! BUT, through the decades a seemingly infinite number of secondary uses have come to develop around this beautiful body of water. It was my pleasure today to help celebrate one of them at Splash Day. (1/2)



The city has planted **wildflowers** along **Hefner road** (and a median on Lake **Hefner Drive**) as a possible strategy to reduce mowing along the dams and to serve as pollinators gardens. They are beautiful.



TravelOK.com @Tra... · Sep 9, 2020 ...

Don't let the urban landscape of central Oklahoma fool you - this region has incredible angling options! From Lake Thunderbird to **Lake Hefner**, explore this diverse area on the Oklahoma Fishing Trail! [#FishinOK](#) bit.ly/CentralLoop



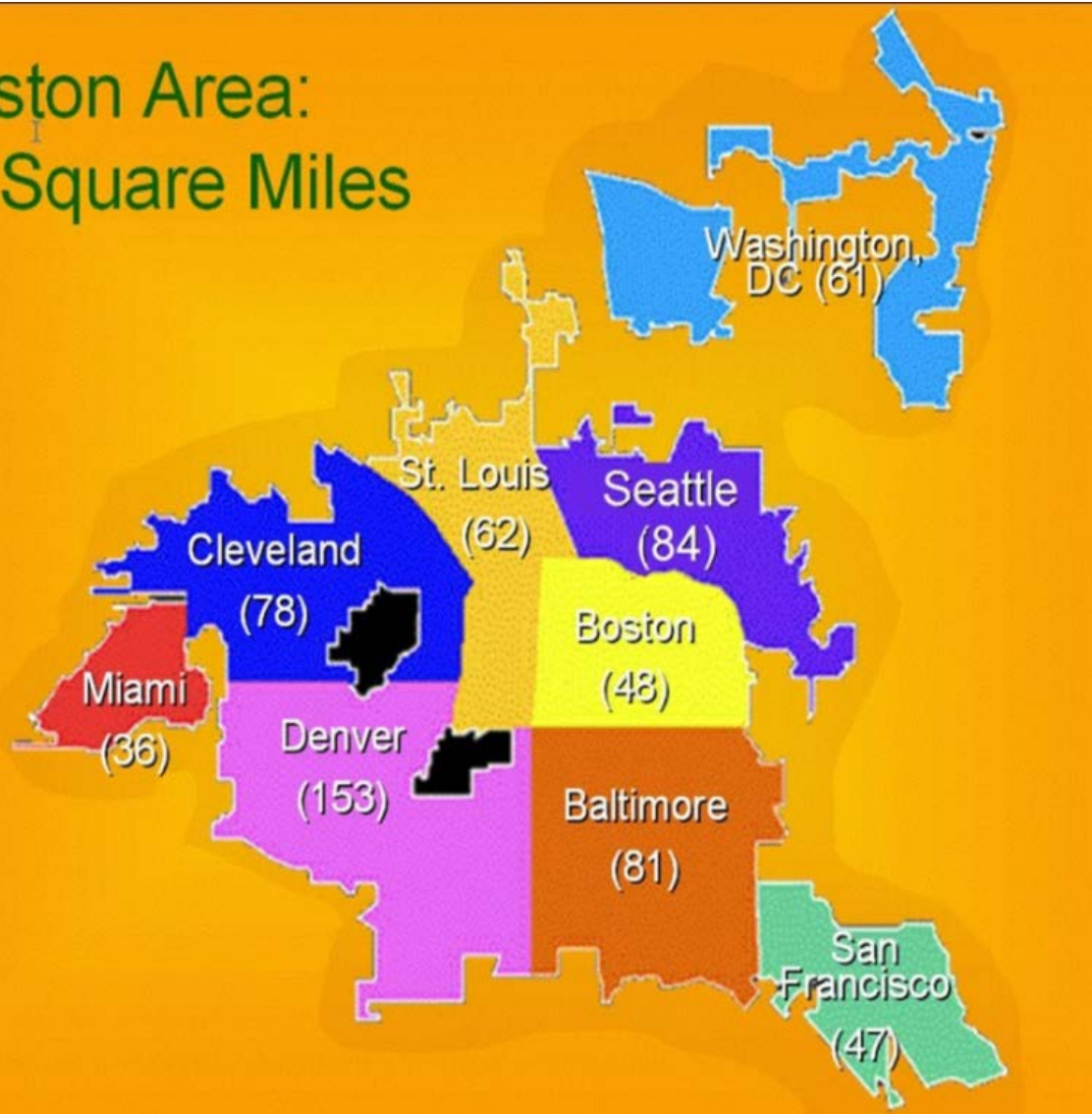
Just like that... and colors are popping around **Lake Hefner** 🍁🍂



Beautiful ride this evening on the West River Trail up to Lake **Overholser**. [#okcrivertrails](#) [#okc](#)



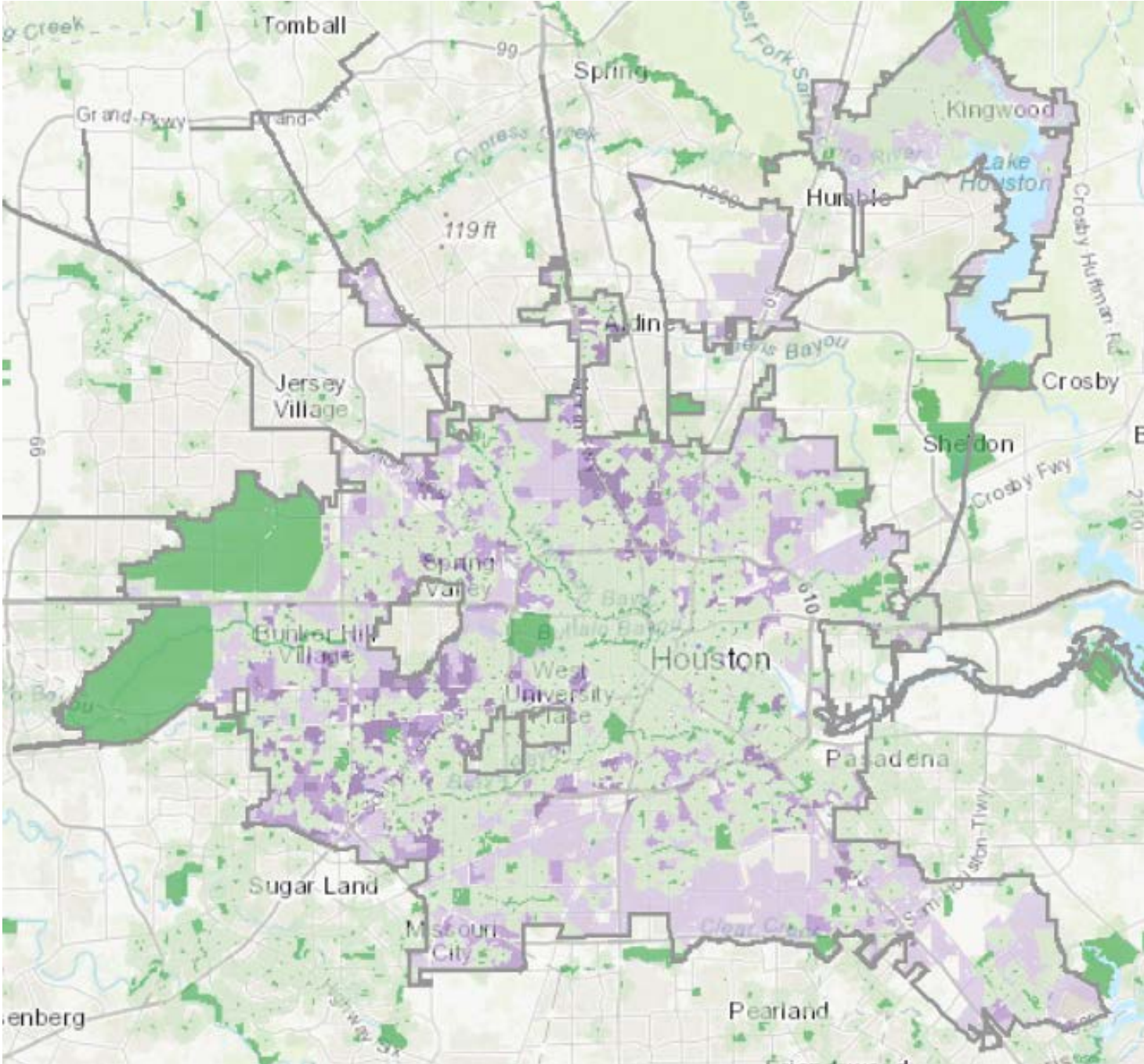
Houston Area: 656 Square Miles



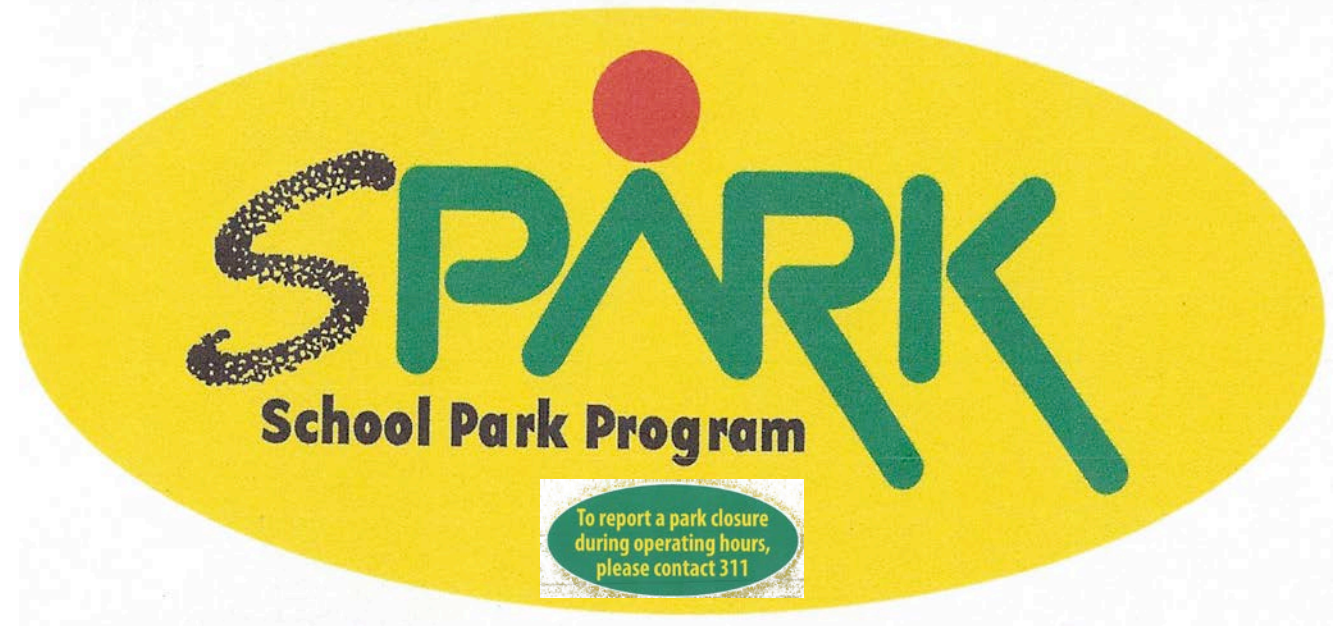
City of Houston Profile

- Population: 2,325,353
- 669 Parks
- 42,326 park acres
- Pop. Served: 1,381,935
- 60.5% served (10-Min. Walk)
- Houston's Park Score: 70th

The Trust for Public Land Parkscore®



- Started in 1983, result of Green Ribbon Committee – need for more park space
- Agreement with Independent School Districts (work with 17 of 23 ISDs in Houston) for 10-year period
- ISDs/schools maintain parks
- SPARK Committee designs park – unique
- Public art component



SPARK Park Hours of Operation
 Mon. - Fri. After school hours until dusk
 Sat. & Sun. 7:00 AM until dusk

SPARK Parque Horario de operación
 De lunes a viernes después del horario escolar hasta el anochecer.
 Sáb-Dom 7:00 AM hasta el atardecer

 **GLASS CONTAINERS PROHIBITED**
PROHIBIDO ENVASES DE VIDRIO

 **ALCOHOLIC BEVERAGES PROHIBITED**
PROHIBIDAS LAS BEBIDAS ALCOHOLICAS

Dogs are not allowed in children's play areas or on athletic fields.

Los perros no están permitidos en áreas de juego o en los campos deportivos.

Contact Info:

Elizabeth Howley

Elizabeth@sparkpark.org

Office: 832-393-0910

Kathleen Ownby

Kathleen@sparkpark.org

Office: 832-393-0911

